

Exhibiting Information for Next Shows



World Meets Energy

SMART ENERGY WEEK

BIOMASS EXPO

Int'l Biomass Expo

Dates: Feb. 19 [Wed] - 21 [Fri], 2025

Venue: Tokyo Big Sight, Japan

Built by



In the business of
building businesses

Organiser: RX Japan Ltd.

Co-organisers: Japan Woody Bioenergy Association/Japan Organics Recycling Association

INDEX

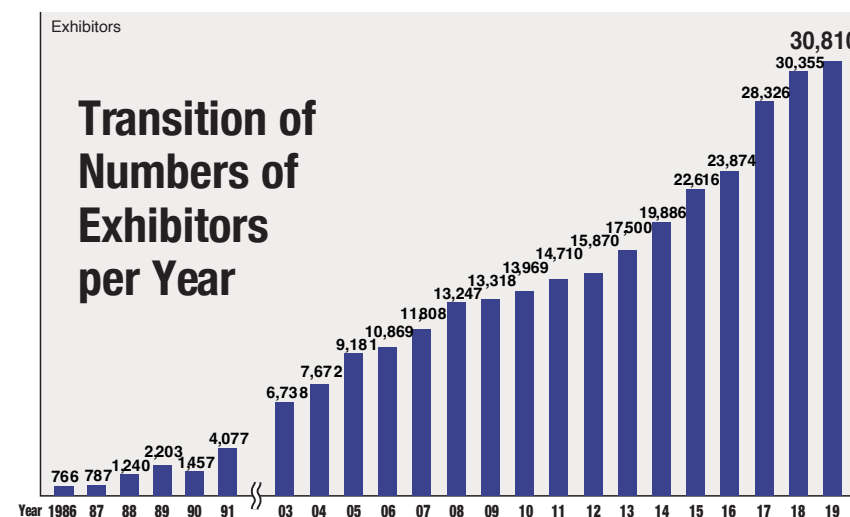
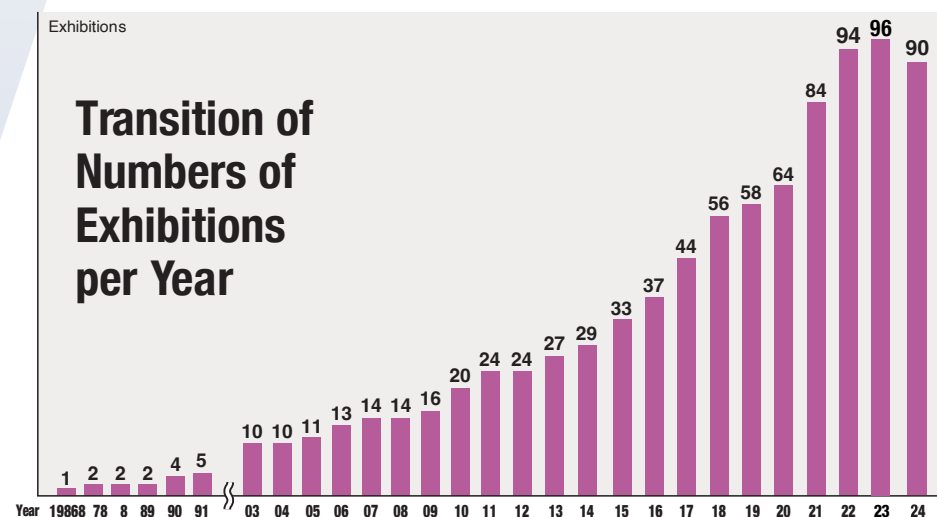
About Organiser: RX Japan Ltd.	2
Scenes from Show Venue	3
Features of BIOMASS EXPO	4
Floor Plan	5
Visitor Profile	6
Conference	7
Schedule to Show Dates	8
Support Service for Exhibitors	9
Available Exhibit Space & Price List	10

RX Japan is Japan's Largest Trade Show Organiser

Holding 90 exhibitions in 39 sectors a year! (The consisting shows are 372 in total.)

RX Japan organises 90 exhibitions a year at large exhibition halls such as Tokyo Big Sight, Makuhari Messe and INTEX Osaka across a wide variety of 39 fields including jewellery, fashion, gift items, electronics, energy, IT, cosmetics and medical.

RX Japan fully contributes to expand the exhibitors' business by making the most of the expertise backed up with the experiences.



Exhibitions organised by RX Japan (excerpts)

CONTENT TOKYO



Japan's Largest* Trade Show for Content Creation, Production, and Licensing

Consisting Shows:

- Production/Studio Expo
- Advanced Digital Technology Expo
- Ad Creative & Marketing Expo

etc.

Manufacturing World Japan



Asia's Leading Trade Show for Manufacturing

Consisting Shows:

- Design Engineering & Manufacturing Solutions Expo
- Industrial AI/IoT Expo
- Additive Manufacturing Expo

etc.

JAPAN BUILD –Int'l Building & Home Week–



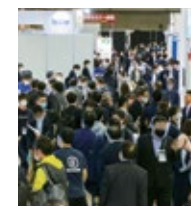
Asia's Leading Show Covering Building and Housing Industries

Consisting Shows:

- Smart Home Expo
- Smart Building Expo
- Building Renovation Expo
- Building Material & Housing Equipment Expo

etc.

MEDICAL JAPAN



Leading Trade Show for Medical, Elderly Care and Pharmacy Industry

Consisting Shows:

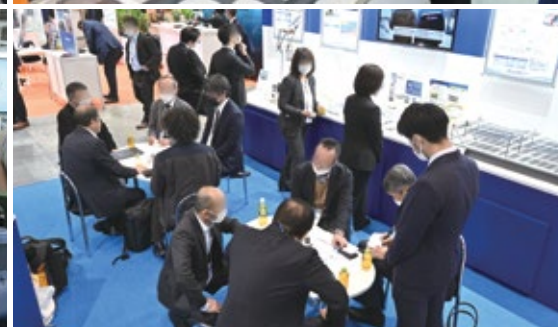
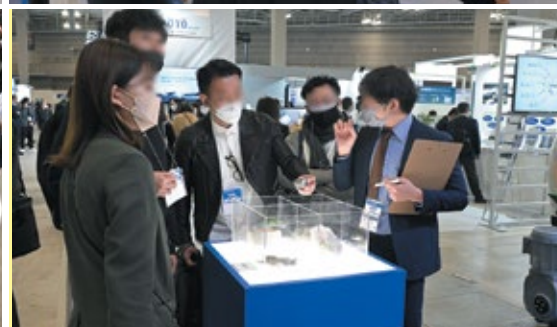
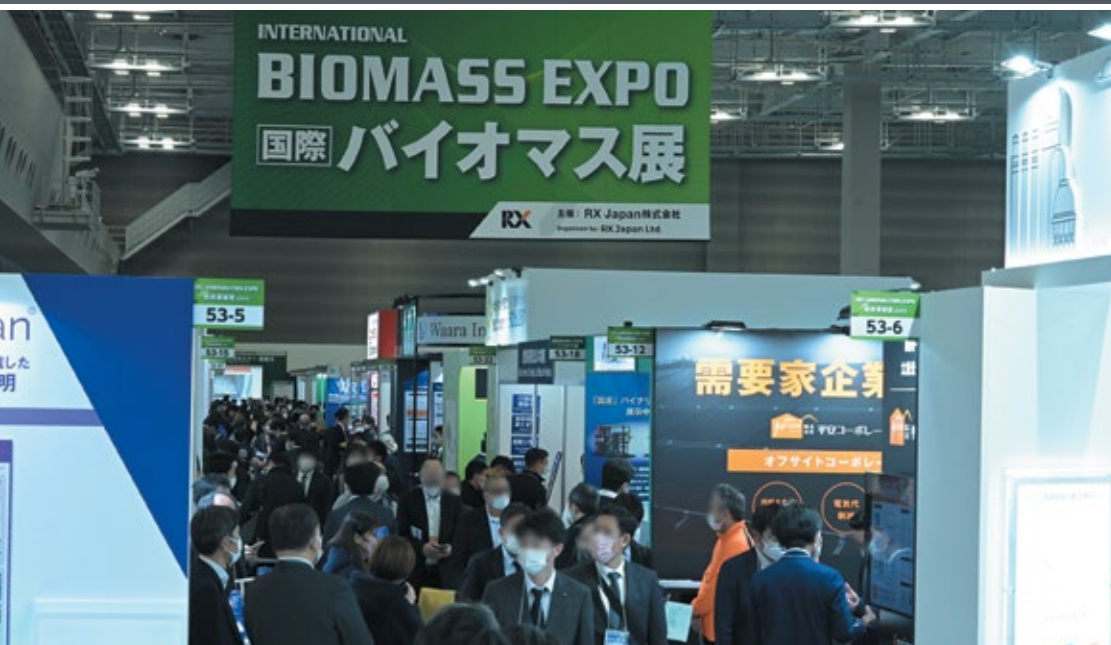
- Hospital Expo
- Clinics Expo
- Pharmacy Solutions Expo
- Elderly Care & Welfare Expo

etc.

* "Largest" in reference to the exhibitor number of trade shows with the same concept.

Japan's Largest! Best Gateway to Japanese Biomass Market!

"Largest" in reference to the exhibitor number and the net exhibit space of trade shows with the same concept.



B-to-B Trade Show for Industry Experts

Exhibitors

Companies dealing in the following categories:

- Biomass Fuel
- Crusher/Pulveriser
- Dehydrator/Dryer
- Inspection/Testing Technology
- Manufacturing Equipment
- Methane Fermentation Equipment
- Power Generation, Heat Utilisation

etc.

Business Meetings

- ◆ Receive orders for products and technologies
- ◆ Technical consultation
- ◆ Quotation and Delivery Arrangement

Visitors

Professionals from:

- Biomass Power Generator
- Government/Municipality
- Forest Management Union
- Agricultural Corporation
- Industrial Waste Disposal Company
- Corporate User (Public Facility, Factory)
- New Entrant to Energy Industry

etc.

Held Annually - Join Us in February 2025

Tokyo Show in February

Dates: Feb. 19 [Wed] - 21 [Fri], 2025

Venue: Tokyo Big Sight

No. of Exhibitors

1,700

No. of Visitors

75,000

Concurrent Show

GREEN TRANSFORMATION WEEK February 2025

SMART ENERGY WEEK February 2025

DECARBONIZATION EXPO

WIND EXPO

ZERO-E THERMAL EXPO

H₂&FC EXPO

PV EXPO

CIRCULAR ECONOMY EXPO

SMART GRID EXPO

BATTERY JAPAN

PV EXPO

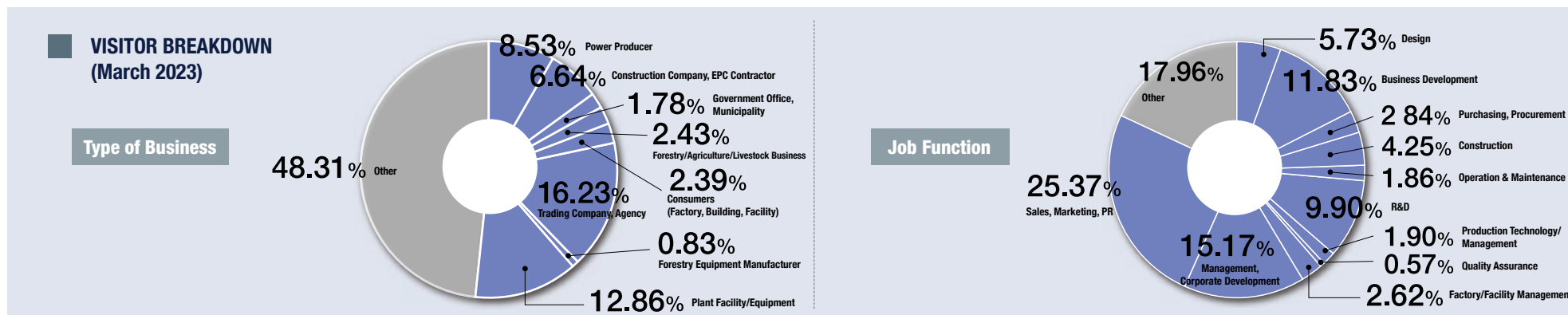
BIOMASS EXPO

East Halls

South Halls

Exhibitors & visitor numbers are forecasts including co-held shows, and the numbers of exhibitors include co-exhibiting partners, group companies and association members. The floor plan is subject to change.

Biomass Market Leaders Visit From All Over Japan



< Past Visitors (Company names are excerpts and shortened in random order.) >

- AGRICULTURE AND FOOD INDUSTRY TECHNOLOGY INSTITUTE
- AICHI PREFECTURE
- AITH MANAGEMENT
- ASANO DAISEI FOUNDATION ENGINEERING
- ASSET HOLDINGS
- ATAGO GLOBAL ENERGY
- ATOM
- ATOX
- BIOCLASSICS HANDA
- BIOMASS POWER GENERATION OPERATORS ASSOCIATION
- BWSC JAPAN
- CENTRAL UNION OF AGRICULTURAL COOPERATIVES
- CHICHIBU DOKEI
- CHIEN TAKAGUMI
- CHUBU PLANT SERVICE
- CHUKYU SOLAR SYSTEM
- CRIHULANT
- CSS
- DAIGAS ENERGY
- ENBIO ENGINEERING
- ENERGIA POWER YAMAGUCHI
- ENERGY VISION
- ENEWHALE
- EQUICENTRAL SERVICE JAPAN
- E-TOP
- EXIO GROUP
- FOREST ENERGY
- FORESTRY AND FOREST PRODUCTS RESEARCH INSTITUTE
- FUJIKO
- FUJITA
- FUKAMATSU CONSTRUCTION
- GIFU BIOMASS POWER
- GLOBAL JAPAN
- GOYO CONSTRUCTION
- GPE
- HAKODATE REGIONAL INDUSTRY PROMOTION FOUNDATION
- HYOGO PREFECTURE
- ICHIKAWA CITY AGRICULTURAL COOPERATIVE
- ICHIKAWA ENVIRONMENT HOLDINGS
- IDEMITSU KOSAN
- IIISHI BIO PARTNERS
- IKEDA KOGYO
- INFLUX
- INPEX SOLUTIONS
- ISHIKAWA KOGYO
- JAPAN AGRICULTURE, FORESTRY AND FISHERIES RESEARCH AND DEVELOPMENT ASSOCIATION
- JAPAN COMSIS
- JAPAN INFRASTRUCTURE FUND ADVISORS
- JAPAN INTERNATIONAL COOPERATION AGENCY
- JAPAN INTERNATIONAL RESEARCH CENTER FOR AGRICULTURAL SCIENCES
- JAPAN PAPER
- JAPAN RE-TECH
- JERA
- JFE ENGINEERING
- JGC GLOBAL
- JUMONJI CHICKEN COMPANY
- KAJIMA CORPORATION
- KAKUKO CONSTRUCTION
- KAMAKURA CITY
- KAMIJO DISTRICT FOREST COOPERATIVE
- KANSAI ELECTRIC POWER
- KANSAI HOLDINGS
- KAWASAKI BIOMASS POWER GENERATION
- KIZUNA
- KOBE STEEL ENVIRONMENTAL SOLUTIONS
- KOIKE CONSTRUCTION
- KOJO
- KURIYAMA TOWN
- KYUDEN MIRAI ENERGY
- MAKURAZAKI BIOMASS POWER PLANT
- MIE PREFECTURAL INDUSTRIAL RESEARCH INSTITUTE
- MINISTRY OF AGRICULTURE, FORESTRY AND FISHERIES
- MIYAZAKI BIOMASS RECYCLING
- MIZOBUCHI FORESTRY
- MURAI DISTRIBUTION MANAGEMENT INSTITUTE
- NAITO STEEL INDUSTRY
- NANKO KOGYO
- NEW POWER DEVELOPMENT
- NIPPON STEEL ENGINEERING
- NTT ANODE ENERGY
- OBAYASHI CORPORATION
- OGATSU BIOMASS POWER GENERATION
- OKUMURA CONSTRUCTION GROUP
- OSMIC
- PETROLEUM RESOURCES DEVELOPMENT
- POWER DEVELOPMENT
- PROSPEC AZ
- RINKAI NISSAN CONSTRUCTION
- SANKI CHEMICAL INDUSTRIAL CONSTRUCTION
- SANKI KOGYO
- SEA ENERGY
- SEIBU LANDSCAPING
- SEKINE
- SHARI TOWN
- SHICHUJO
- SHIMANE FOREST POWER GENERATION
- SHIMIZU CONSTRUCTION
- SHIN ENERGY DEVELOPMENT
- SHOJI LUMBER
- SHUSSHIN KUMIAI
- SODEGAURA BIOMASS POWER GENERATION
- SOLARIANT CAPITAL
- SOLCOM
- SPARKS ASSET MANAGEMENT
- SUMITOMO ELECTRIC INDUSTRIES
- SUMITOMO FORESTRY
- SUMITOMO MITSUI FINANCE AND LEASE
- SUMMIT ENERGY
- SUNLIFE
- SUZUYO TRADING
- TAIRA POULTRY BUSINESS COOPERATIVE
- TAKAKATSU HOLDINGS
- TAKAYAMA BIOMASS RESEARCH INSTITUTE
- TAKEEI
- TAKEEI GREEN RECYCLING
- TAKENAKA CORPORATION
- TAKUMA
- TAMURA BIOMASS ENERGY
- TEIKOKU ZORIN
- TOA CONSTRUCTION INDUSTRY
- TOHOKU TOWN FOREST COOPERATIVE
- TOKO DENKI KOGYO
- TOKYO ENERGY & SYSTEMS
- TOKYO GAS ENGINEERING SOLUTIONS
- TOKYO INDUSTRY
- TOKYO PROPERTY MANAGEMENT
- TOSHIBA ENERGY SYSTEMS
- TOSHIBA PLANT SYSTEMS
- TOYO NAMIHEI BIOMASS POWER PLANT
- T'S WORKS
- TSUNEISHI GREEN ENERGY
- T-WAI
- V&T ENERGY MANAGEMENT
- WOODONE
- YONDENKO ENGINEERING
- YOSHIOKA CONSTRUCTION
- YOTSUICHI CITY
- YOUR ENERGY DEVELOPMENT

...and more

Co-held Conference by Industry Front-runners Attract More Visitors



Past Conference Speakers (excerpts, in random order, honorifics omitted)

Company names, professional affiliation, and official positions are at the time of the presentation and edited for space.



Kotaro Shimizu
Director,
Environment and Biomass Policy Div.,
Minister's Secretariat,
Ministry of Agriculture, Forestry
and Fisheries



Shinjiro Sasaki
Director,
Office for Circular and Ecological
Economy
Ministry of the Environment



Takeshi Ariyama
Deputy Director,
Wood Use Promotion Div.,
Forestry Agency of Japan



Fumihiro Kajikawa
Director,
Ministry of Economy, Trade and
Industry



Brent Wanner
Head of Power Sector Unit
World Energy Outlook
International Energy Agency (IEA)



Masayuki Inoue
Senior Executive Officer,
Osaka Gas Co., Ltd./
President,
DAIGAS ENERGY Co., Ltd.



Takanobu Yasunaga
Managing Director
erex Ltd.



Toshihiko Okamoto
Representative,
TOMOE TECHNO Co., Ltd.



Takanori Sudo
CEO,
Flow Inc.



Tomotaka Kumagai
Chief Executive Officer,
Biostock Corp.



Kazuhiro Moriyama
President & Chief
Executive Officer,
Morisho Co., Ltd.

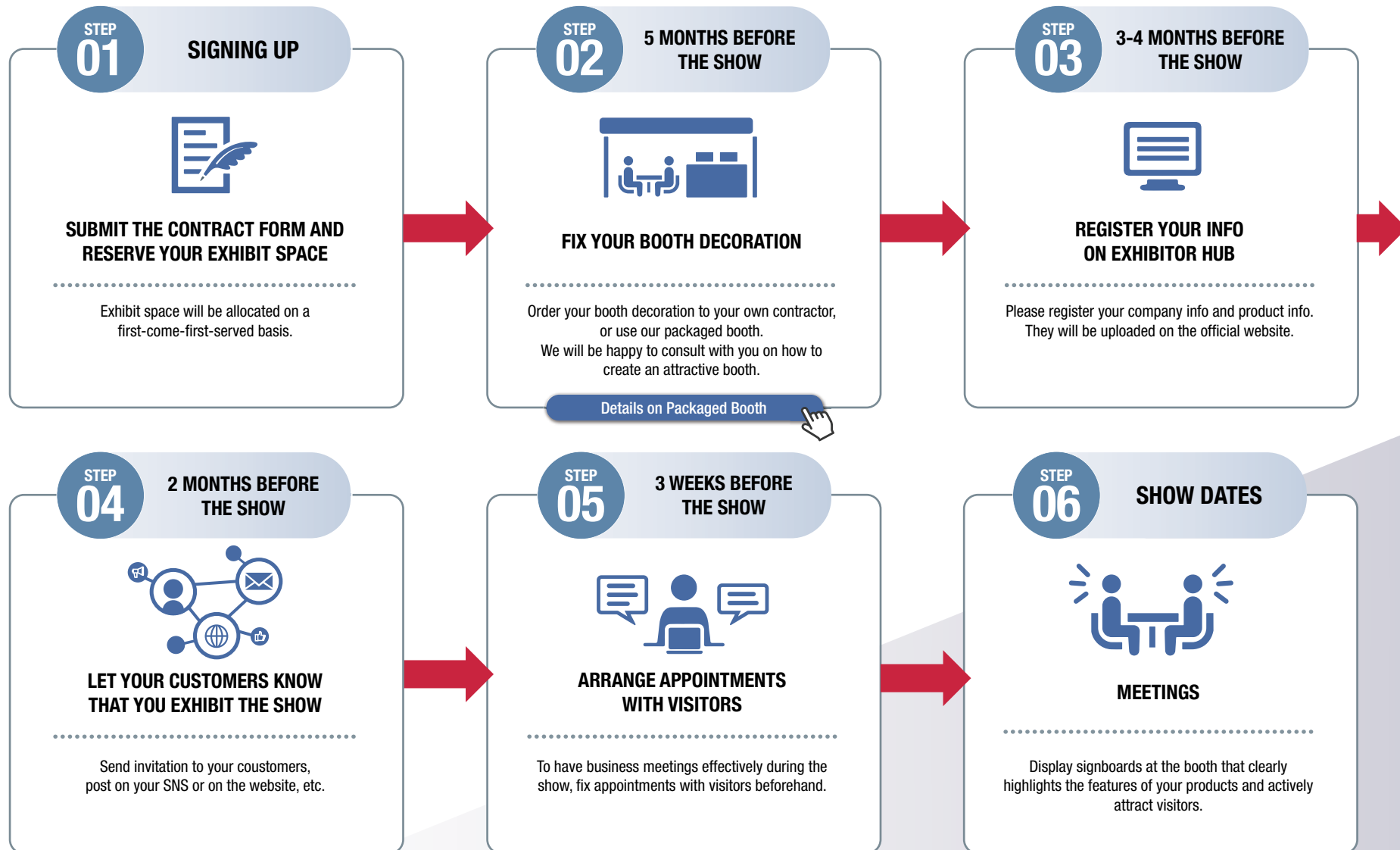


Masahiro Inui
Chief Executive Officer,
SymEnergy Inc.



Hiroyoshi Wada
Assistant General Manager,
Business Design Dept.,
West Japan Railway Co.

Schedule until the Show



Support Services for Exhibitors

1 OUR "EXHIBITOR SUCCESS" TEAM WILL SUPPORT YOU

Our Exhibitors Success Team will support your preparation until the show to make your exhibiting successful.



2 LISTING ON EXHIBITOR DIRECTORY (WITH A CHARGE)

Visitors will check Exhibitor Directory before their visit and also they request appointments via the website.



<image>



3 ADVERTISING OPPORTUNITIES (WITH A CHARGE)

We offer various advertising plans to maximise the outcome through your participation. For the details, please refer to the brochure.

DETAILS ON ADVERTISING OPPORTUNITIES



4 EXHIBITORS' PRESENTATION (WITH A CHARGE)

It is held in the exhibition hall and audiences can attend free of charge without prior registration.



Contact us for booth availability, participation cost, etc.



CHECK BOOTH AVAILABILITY



DOWNLOAD APPLICATION FORM

CHOOSE YOUR BOOTH LOCATION ON A FIRST-COME-FIRST-SERVED BASIS!

Contact

Organiser: RX Japan Ltd. BIOMASS EXPO Show Management
11F Tokyo Midtown Yaesu, 2-2-1 Yaesu, Chuo-ku, Tokyo 104-0028, Japan



E-mail: biomass.jp@rxglobal.com



Tel: +81-3-6739-4119



Web: www.wsew.jp/hub/en-gb/about/bm.html