

Exhibiting Information for Next Shows



BATTERY JAPAN

Int'l Rechargeable Battery Expo

Tokyo Show in February

18th BATTERY JAPAN [February]

Dates: Feb. 19 [Wed] - 21 [Fri], 2025
Venue: Tokyo Big Sight, Japan

Tokyo Show in September

19th BATTERY JAPAN [September]

Dates: Sep. 17 [Wed] - 19 [Fri], 2025
Venue: Makuhari Messe, Japan

Osaka Show in November

12th BATTERY JAPAN [Osaka]

Dates: Nov. 19 [Wed] - 21 [Fri], 2025
Venue: INTEX Osaka, Japan

Built by
RX In the business of
building businesses

Organiser: RX Japan Ltd.



INDEX

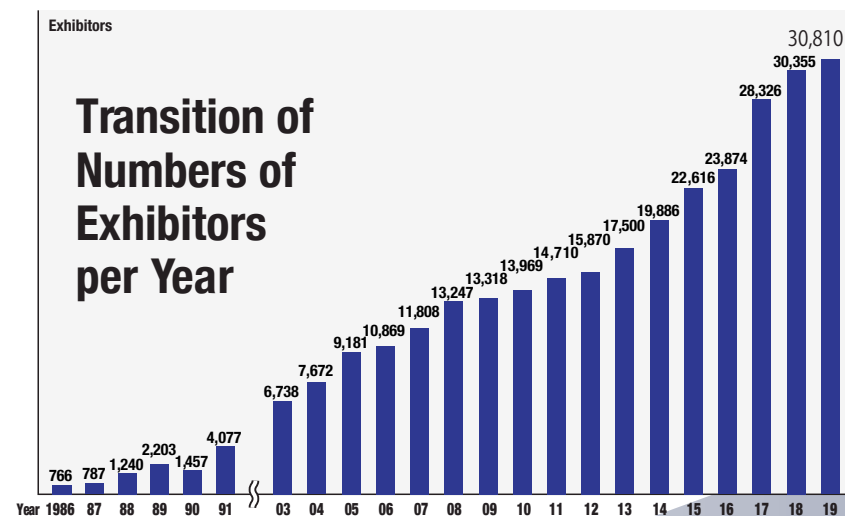
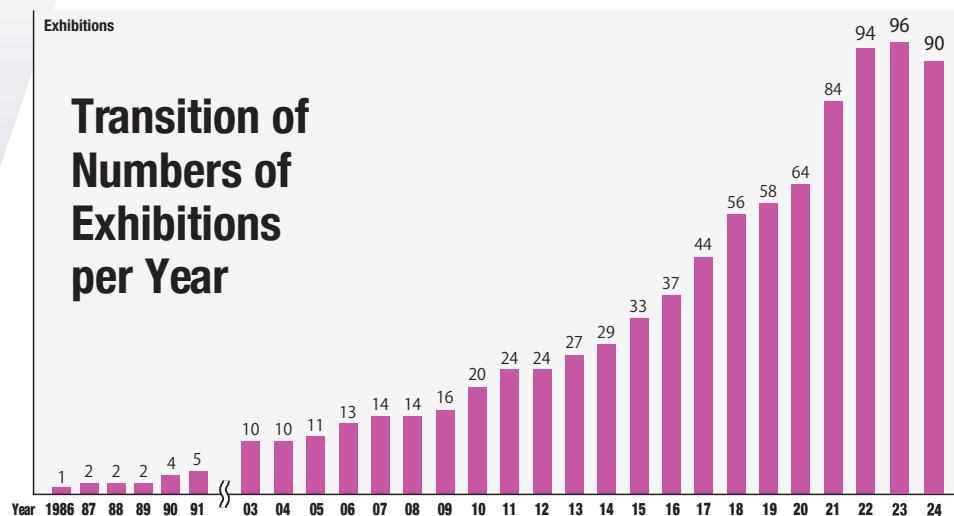
About Organiser: RX Japan Ltd.....	2
Scenes from Show Venue	3
Exhibit & Visitor Profile of BATTERY JAPAN	4
Visitor Details.....	5
Co-held Conference	6
February Edition	7
September Edition	8
Osaka Edition.....	9
Characteristics of Tokyo & Osaka Shows	10
February & September Edition	11
Preparation Schedule	12
Support Service for Exhibitors.....	13
Available Exhibit Space & Price List	14

RX Japan is Japan's Largest Trade Show Organiser

Holding 90 exhibitions in 39 sectors a year! (The consisting shows are 372 in total.)

RX Japan organises 90 exhibitions a year at large exhibition halls such as Tokyo Big Sight, Makuhari Messe and INTEX Osaka across a wide variety of 39 fields including jewellery, fashion, gift items, electronics, energy, IT, cosmetics and medical.

RX Japan fully contributes to expand the exhibitors' business by making the most of the expertise backed up with the experiences.



Exhibitors organised by RX Japan (exerpts)

CONTENT TOKYO



Japan's Largest* Trade Show for Content Creation, Production, and Licensing

Consisting Shows:

- Video & CG Production Expo
- Advanced Digital Technology Expo
- Ad Creative & Marketing Expo

etc.

MANUFACTURING WORLD



Asia's Leading Trade Show for Manufacturing

Consisting Shows:

- Design Manufacturing Solutions Expo
- Manufacturing DX Expo
- Additive Manufacturing Expo

etc.

JAPAN BUILD –Int'l Building & Home Week–



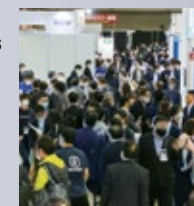
Asia's Leading Show Covering Building and Housing Industries

Consisting Shows:

- Smart Home Expo
- Smart Building Expo
- Building Renovation Expo
- Building Material & Housing Equipment Expo

etc.

MEDICAL JAPAN



Japan's Leading Trade Show for Medical, Elderly Care and Pharmacy Industry

Consisting Shows:

- Hospital Expo
- Clinics Expo
- Pharmacy Solutions Expo
- Elderly Care & Welfare Expo

etc.

* "Largest" in reference to the exhibitor number of trade shows with the same concept.

The Best Gateway to the Japan & Asia's Rechargeable Battery Market!



Best Platform to Increase Your Presence & Meet New Customers

EXHIBITORS

Manufacturers/Trading Agents
dealing in:

- Battery Component/Material
- Manufacturing Equipment
- Battery Management System
- Inspection/Testing Equipment
- Evaluation Equipment
- Rechargeable Battery
(Automobile/Stationary/Mobile)
- Recycling Technology

etc.

BUSINESS MEETINGS

- ◆ Receive orders for products
and technologies
- ◆ Business Alliance
- ◆ Quotation and
Delivery Arrangement

etc.

VISITORS

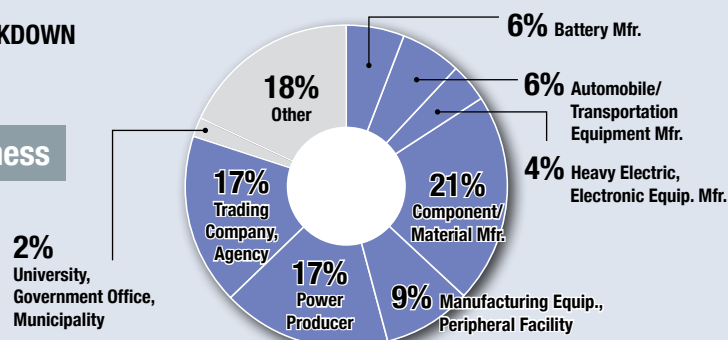
- Battery Manufacturers
- Material Manufacturers
- Automobiles/Electronics
Manufacturers
- Heavy Electronics Manufacturers
- General Contractor, Housing
Company
- Universities, Research Institutes
- Trading Agencies
- New Entrants to Battery Industry

etc.

Decision Makers from Battery/Automotive/Electronics Mfrs. Visit

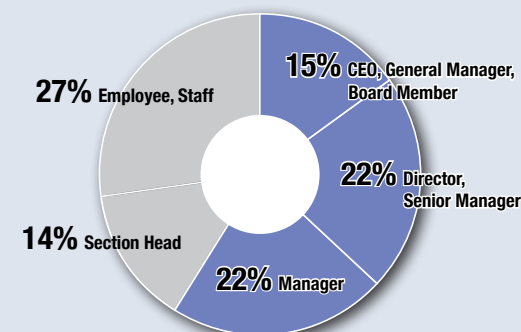
VISITOR BREAKDOWN (MARCH 2023)

Type of Business



Job Title

59% were Manager or above level.



< Past Visitors (Company names are excerpts and shortened in random order.) >

<BATTERY MANUFACTURERS>

- I&D EX
- I&T NEW MATERIALS
- IOXUS JAPAN
- ANCHOR JAPAN
- EBLIDACELL
- WINGS
- EIGHT ENERGY
- EXCELERGY POWER SYSTEMS
- EDISON POWER
- ENERSIS JAPAN
- ENERGY WITH
- ENAX
- ENATEC
- ELLIE POWER
- ENVISION AESC JAPAN
- OVERVIEW
- KAIREN TECHNO BRIDGE
- CRIOTECH
- GRIMM
- ELECTRONICS
- COSMOS POWER SYSTEMS

- CONTEMPORARY AMPREX TECHNOLOGY JAPAN
- CIRCULAR ENERGY STORAGE SOLUTION
- SAFT JAPAN
- SAMSUNG SDI JAPAN
- SAMSUNG ELECTRONICS JAPAN
- SAMSUNG JAPAN RESEARCH INSTITUTE
- SUNPOWER TECHNO
- G3 HOLDINGS
- GS YUASA
- GS YUASA TECHNOLOGY
- THREEDIM
- THREEDIM ALLIANCE
- SEIKO INSTRUMENTS
- SYNERGY
- SONY IMAGING PRODUCTS & SOLUTIONS
- DAITRON
- AA HOLDINGS
- TDK
- TOKADO ENERGY

- TRINA ENERGY STORAGE JAPAN
- NIDAIKI
- NICHICON
- HIDAC
- PANASONIC INDUSTRY
- PANASONIC ENERGY
- PANASONIC AUTOMOTIVE SYSTEMS
- PANASONIC OPERATIONAL EXCELLENCE
- PANASONIC PRODUCTION ENGINEERING
- BARRIOS STAR
- POWEREX
- BMZ JAPAN
- VEHICLE ENERGY JAPAN
- BWI JAPAN
- HUMAN HORIZONS
- FINE ECO SOLUTION
- FALT MICROBATTERY JAPAN

- PRIME PLANET ENERGY & SOLUTIONS
- PRIME STAR
- PRIME EARTH EV ENERGY
- BRIGGS & STRATTON JAPAN
- BEISAN
- MICROCHIP TECHNOLOGY JAPAN
- MAXELL
- MAP ELECTRONICS
- MATERIAL WORKS
- LITHIUM ENERGY JAPAN
- RESONAC
- KYOCERA
- CO-CREATION
- HYUNDAI SONWOO SOLITE
- FURUKAWA BATTERY
- GOTION JAPAN
- SAIKI
- MISHIMA ELECTRONICS
- SHONAN CORUN ENERGY

- SEKISUI CHEMICAL INDUSTRY
- IZUMI BATTERY INDUSTRY
- MURATA MANUFACTURING
- TAIYO YUDEX
- TOSHIBA
- TOSHIBA LIFESTYLE
- TOSHIBA BATTERY
- TOHOKU MURATA MANUFACTURING
- NGK INSULATORS
- JAPAN SAMSUNG
- LITE-ON JAPAN
- JAPAN LEXEL
- NEC GLASS
- JAPAN FINE CERAMICS
- HITACHI HIGH-TECH
- MUSASHI PRECISION INDUSTRY
- APB
- CONNEXX SYSTEMS
- ENPOWER JAPAN
- FDK

- HUAWEI DIGITAL POWER TECHNOLOGIES
 - JEE POWER
 - KMTEC
 - LG JAPAN LAB
 - LUC
 - NEXT-E SOLUTIONS
 - ORLIB
 - ROY POW
 - TWS TECHNOLOGY
- ...and more

<AUTOMOTIVE & TRANSPORT EQUIPMENT MANUFACTURERS>

- ISUZU MOTORS
- KAWASAKI MOTORS
- KOMATSU
- SUZUKI MOTOR CORPORATION
- SUBARU
- DAIHATSU
- DENSO
- TOYOTA MOTOR
- TOYOTA MOTOR EAST JAPAN

- TOYOTA INDUSTRIES
 - TOYOTA CENTRAL R&D LABS
 - NISSAN MOTOR
 - NISSAN MOTORSPORTS & CUSTOMIZING
 - HINO MOTORS
 - HONDA MOTOR
 - HONDA R&D
 - HONDA TRADING
 - MAZDA
 - MITSUBISHI MOTORS
 - YAMAHA MOTOR
 - YAMAHA MOTOR POWER PRODUCTS
- ...and more

<ELECTRICAL & ELECTRONICS MANUFACTURERS>

- IHI
- SYMPHONY TECHNOLOGY
- SUMITOMO HEAVY INDUSTRIES
- DELTA ELECTRONICS

- PANASONIC
 - PANASONIC PRODUCTION ENGINEERING
 - PANASONIC HOLDINGS
 - HITACHI
 - HITACHI ZOSEN
 - HUAWEI TECHNOLOGIES JAPAN
 - MITSUBISHI ELECTRIC
 - MITSUBISHI ELECTRIC ENGINEERING
 - YASKAWA ELECTRIC
- ...and more

Co-held Conference by Industry Front-runners Attract More Visitors



Past Conference Speakers (excerpts, in random order, honorifics omitted)

Company names, professional affiliation, and official positions are at the time of the presentation and edited for space.



Nobutaka Takeo
Director,
Ministry of Economy, Trade
and Industry



Takuhiro Miyuki
General Manager,
Departments of National
(NEDO) Project,
LIBTEC



Shoichiro Watanabe
Vice President, CTO,
Energy Company,
Panasonic Corp.
(Current: Panasonic Energy Co., Ltd.)



Hiromitsu Mishima
Principal Engineer,
Energy Systems R&D Div.,
Corporate R&D Group,
KYOCERA Corp.



Wataru Matsuoka
Senior Manager of the
Technical Solution Div.,
PowerX, Inc.



Kazuyuki Iwata
Executive Chief Engineer,
Innovative Research
Excellence, Power Unit &
Energy,
Honda R&D Co., Ltd.
Business Development
Supervisory Unit
Honda Motor Co., Ltd.



Yoshiomto Matsuda
Associate Corporate Officer,
Deputy General Manager,
Motorcycle Business Div.,
Deputy General Manager,
Research & Development Div.,
Kawasaki Motors, Ltd.



Izumi Kawanishi
Executive Vice President,
AI Robotics Business,
Senior General Manager of AI
Robotics Business Group,
Sony Group Corp.



Toshiaki Sato
General Manager,
Battery Material & Recycling
Promotion Office, Advanced
Technology & Strategy Dept.
Technology Group,
JX Nippon Mining &
Metals Corp.



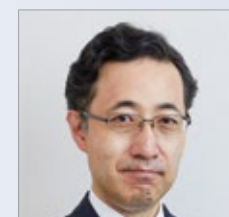
Hiroyasu Etoh
General Manager,
Engineering Dept., Cathode
Material Div.,
NICHIA Corp.



Masaharu Katayama
Executive Officer COO
for Metal Div.,
Metal Div.,
Toyota Tsusho Corp.



Toshio Kumazawa
Head of the East Japan
Branch,
Managing Executive Officer,
JERA Co., Inc.



Hiroshi Okamoto
Executive Vice President, Chief
Technology Officer,
TEPCO Power Grid Inc./
Representative Secretary,
Smart Resilience Network



Takayuki Hakugin
Director, Executive Vice
President,
Kansai Transmission and
Distribution Inc.

Held Three Times a Year. Exhibit at All Shows!

Tokyo Edition in February



World Meets Energy

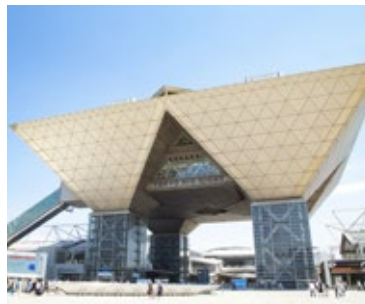
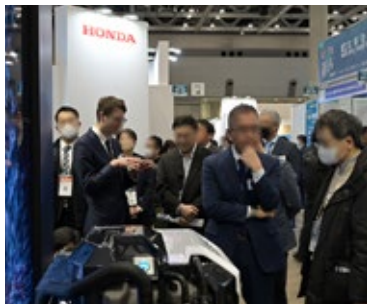
SMART ENERGY WEEK February 2025

Dates: Feb. 19 [Wed] - 21 [Fri], 2025 Venue: Tokyo Big Sight

No. of Exhibitors **1,600** No. of Visitors **72,000** (forecasts)

Features of This Edition

- The world's leading exhibition for renewable energy technologies
- International exhibition & conference where people, information, technologies gather from around the world (Previous edition had exhibitors from 29 & visitors from 59 countries/regions)



Floor Plan (preliminary)

Concurrent Show

GREEN TRANSFORMATION WEEK February 2025

SMART ENERGY WEEK February 2025

DECARBONISATION EXPO

WIND EXPO

ZERO-E THERMAL EXPO

H₂&FC EXPO

PV EXPO

CIRCULAR ECONOMY EXPO

SMART GRID EXPO

BATTERY JAPAN

PV EXPO

BIOMASS EXPO

East Halls

South Halls

Held Three Times a Year. Exhibit at All Shows!

Tokyo Edition in September



World Meets Energy

SMART ENERGY WEEK September 2025

Dates: Sep. 17 [Wed] - 19 [Fri], 2025 Venue: Makuhari Messe

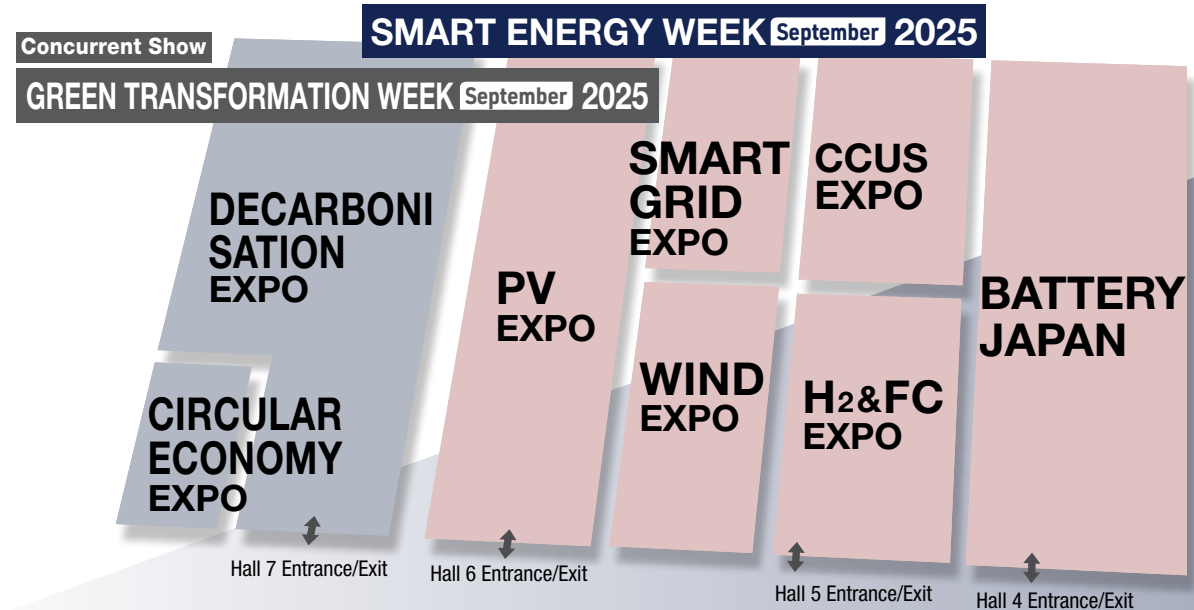
No. of Exhibitors **500** No. of Visitors **45,000** (forecasts)

Features of This Edition

- The largest exhibition for renewable energy technologies held in the 2nd half in Japan
- Visitor number per exhibitor is the highest among the 3 editions. Best place to gather leads efficiently



Floor Plan (preliminary)



Held Three Times a Year. Exhibit at All Shows!

Osaka Edition



World Meets Energy

SMART ENERGY WEEK Osaka 2025

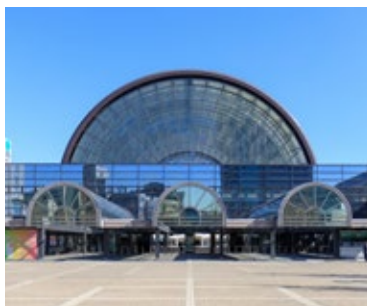
Dates: **Nov. 19 [Wed] - 21 [Fri], 2025** Venue: **INTEX Osaka**

No. of Exhibitors **200**

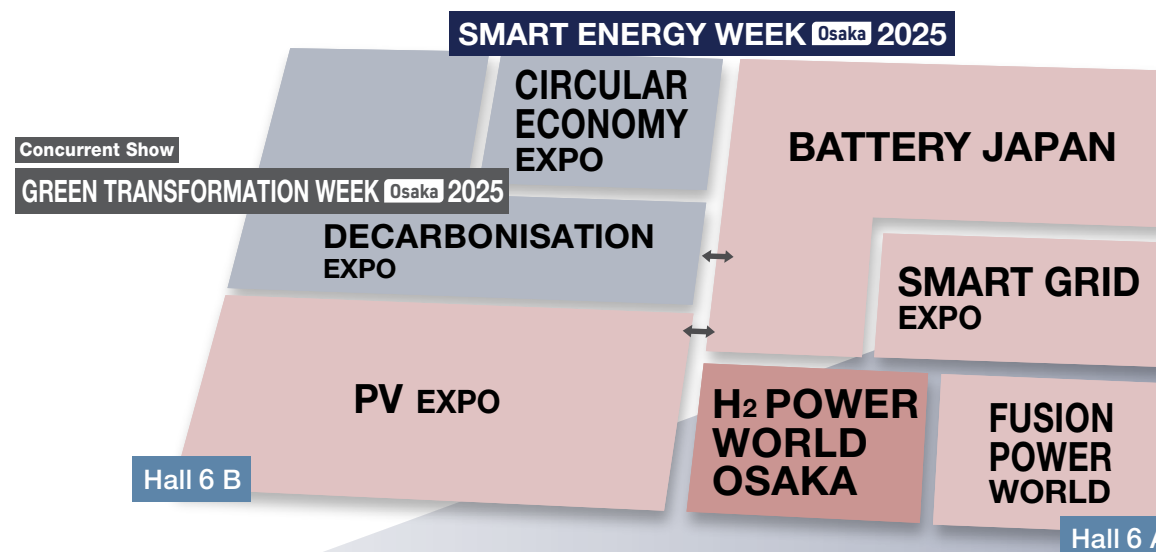
No. of Visitors **15,000** (forecasts)

Features of This Edition

- The largest* exhibition for renewable energy technologies in Western Japan area
- Held in Osaka, the second largest city in Japan economically where many companies have their headquarters and factories
- Supported by major companies and government agencies



Floor Plan (preliminary)



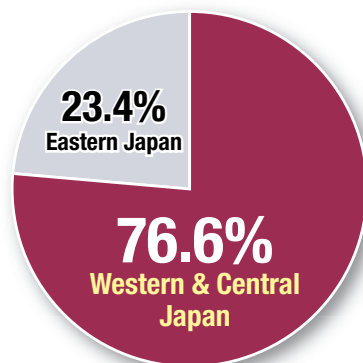
*"Largest" in reference to the exhibitor number and the net exhibit space of trade shows with the same concept.

Exhibit at Both Tokyo & Osaka Shows and Cover the Entire Japanese Market!

■ Visitor Breakdown by Region

Osaka Edition

76.6%
from Western Japan



Show Video

(November 2023 in Osaka)

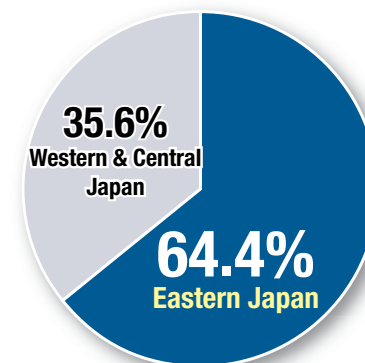


**Less than 1.3% of visitors
visited both shows.**

**You can approach the entire Japanese market
by exhibiting at both regions.**

Tokyo Edition

64.4%
from Eastern Japan



Show Video

(March 2024 in Tokyo)



Comparison between SMART ENERGY WEEK OSAKA 2023
and SMART ENERGY WEEK 2024 [March] in Tokyo

Exhibit at Both Feb. & Sep. Shows and Meet Broader Range of Visitors

- Total number of visitors for both Feb. & Sep. editions were **103,473**
- Only **16.9%** visited both editions
- Exhibiting at both editions enables you to approach broader range of visitors

47,710 visited Feb. edition only 17,486 visited both editions (**16.9%**)

Total visitor No. of Feb. edition: 65,196

20,791 visited Sep. edition only

Total visitor No. of Sep. edition: 38,277

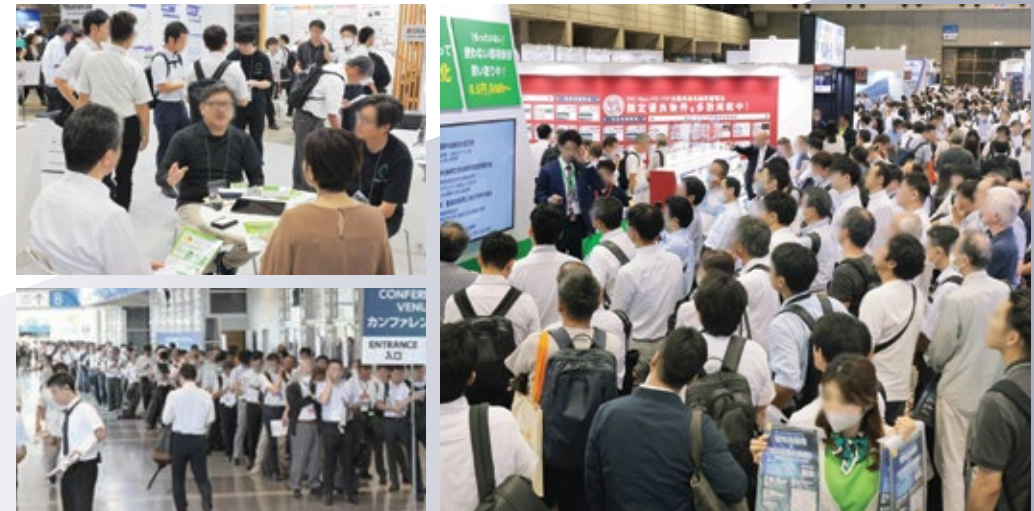
*Numbers are from March & Sep. editions in 2023

- Oct. 2024 edition expects **42,000** visitors

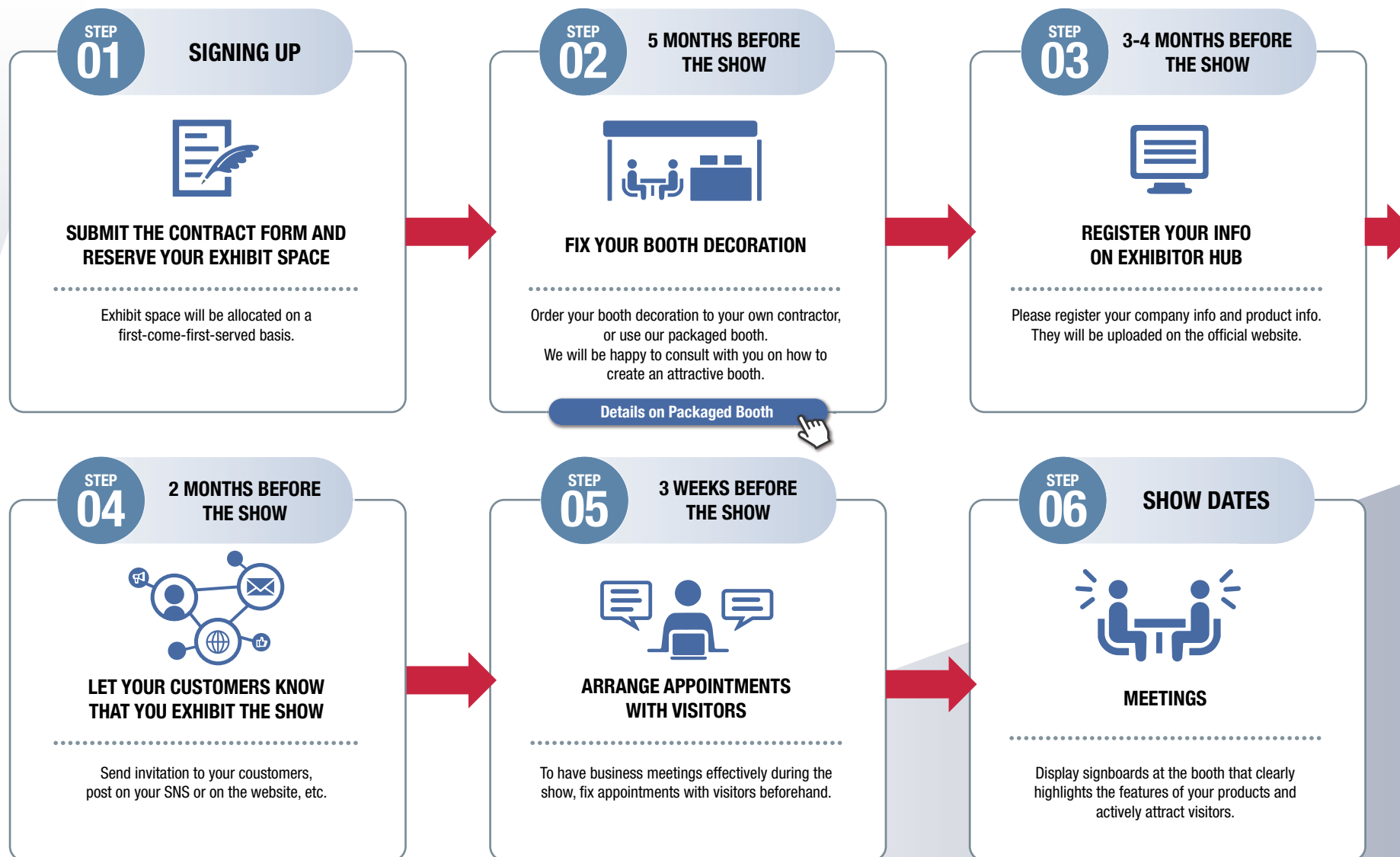
Scenes from past Feb. (Mar.) Edition



Scenes from past Sep. (Oct.) Edition



Schedule until the Show



Support Services for Exhibitors

1 OUR "EXHIBITOR SUCCESS" TEAM WILL SUPPORT YOU

Our Exhibitors Success Team will support your preparation until the show to make your exhibiting successful.



2 LISTING ON EXHIBITOR DIRECTORY (WITH A CHARGE)

Visitors will check Exhibitor Directory before their visit and also they request appointments via the website.



<image>



3 ADVERTISING OPPORTUNITIES (WITH A CHARGE)

We offer various advertising plans to maximise the outcome through your participation. For the details, please refer to the brochure.

[DETAILS ON ADVERTISING OPPORTUNITIES](#)



4 EXHIBITORS' PRESENTATION (WITH A CHARGE)

You can give a presentation on your products and technologies to a large audience at once in the exhibition hall.



Contact us for Booth Availability, Participation Cost, etc.



CHECK BOOTH AVAILABILITY



DOWNLOAD APPLICATION FORM

CHOOSE YOUR BOOTH LOCATION ON A FIRST-COME-FIRST-SERVED BASIS!

CONTACT

Organiser: RX Japan Ltd. BATTERY JAPAN Show Management
11F Tokyo Midtown Yaesu, 2-2-1 Yaesu, Chuo-ku, Tokyo 104-0028, Japan



E-mail: bj.jp@rxglobal.com



Tel: +81-3-6739-4119



Web: www.wsew.jp/hub/en-gb/about/bj.html